



# ART *of the* AUCTION

MISSOULA ART  
MUSEUM'S

**45<sup>TH</sup>**

BENEFIT ART  
AUCTION

# Missoula Art Museum's 45th Benefit Art Auction

# ART *of the* AUCTION

SATURDAY // FEBRUARY 4, 2017 // 5 PM

University Center Ballroom // UM // 3rd Floor

## AUCTIONEER:

JillMarie Wiles, Benefit Auctions 360, Portland, Oregon

## EMCEE:

Ben Weiss

## PRESENTING SPONSOR



## PRESENTING MEDIA SPONSOR

MISSOULA  
*Independent*

## ART OF THE AUCTION SPONSORS:

Anderson ZurMuehlen

Big Sky Commerce

Missoulian

Missoula Broadcasting Company

Noteworthy Paper & Press

Rockin' Rudy's

Rocky Mountain Moving & Storage

Slikati Photography

University Center + UM Catering

Worden's Market

## ACKNOWLEDGEMENTS

Thank you to the many businesses that have donated funds, services, and products to make the auction exhibition, live events, and special programs memorable. Please see the ads throughout this catalog and support the businesses that support MAM. Thank you to all of the auction bidders and attendees for directly supporting MAM's programs. Thank you to the dozens of volunteers who help operate the museum and have contributed additional time, energy, and creativity to help make this important event a success.



# WELCOME

On behalf of the 45th Benefit Art Auction Committee!

At *Art of the Auction*, we encourage everyone to participate in the fast-paced sport of bidding, where artists and art lovers alike come together in appreciation of Missoula's art community and its beloved art museum.

## Committee Co-Chairs

Kim Karniol and James Scott

## Committee Members

Diana Bjorgen

Molly Bradford

John Calsbeek \*

Stephanie Christensen

Leslie Ann Dallapiazza

Linda Fernando

Lynn Metcalf

Laura Millin \*

Ed Morrissey

Bethany O'Connell \*

Tom Seiler

Tonya Seiler

Grace Stopher \*

Cassie Strauss \*

## Auction Jury

Besty Bach

John Calsbeek \*

Paul Filicetti

Barb Schwartz Karst

Ed Morrissey

Brandon Reintjes \*

Shalene Valenzuela

*\*MAM Staff Committee Member*

**THANK YOU** to all of the artists for their generous contributions. You make this fundraiser possible! All artists are donating at least 50% of the sale of their artworks to support the next year of contemporary art programming at MAM.

We would like to acknowledge those artists contributing at 100% and 75% levels:

## 100% Donation

Holly Andres

Joe Boddy

Christiane Buell

J.M. Cooper

Dudley Dana

Kate Davis

Laurel Fletcher

Stephen Glueckert

Robert Harrison

David James

Gesine Janzen

Kathryn Kress

Ellen Kuntz

David Miles Lusk

Sarah Moore

Steve Muhs

Tim Nielson

Clay Pape

Jody Paulson

Whitney Polich

Marvie Redmond

Seth Roby

Sara Siestrem

Richard Smith

Cynthia St. Charles

Lido Vizzutti

Don Voisine

## 75% Donation

Jill Brody

Eva Champagne

Steven Krutek

Jodi Lightner

Beth Lo

James Todd, Jr.



— EST

Missoula's first grocery store

## Worden's Wine Wall

Auction attendees have the opportunity to take home an exceptional bottle of wine. The Worden's Wine Wall features wines valued at \$25 or above. MAM staff, sponsors, board members and volunteers worked on providing an enticing array of varietals and vintners, making this a delectable assortment. Thank you to the generous individual donors and to Worden's Market & Deli for providing this selection.

**How it works:** Each participant draws a number that correlates to a specific bottle of wine. Each purchased bottle will be marked with the winner's bid number, available to pick up at the end of the evening. Bottles cannot be opened during the event.



**1883** —

**Proud to support the arts!**

## **Slikati Photography Art of the Auction Photo Booth**

**\$10 per sitting, includes one print for groups of 10 or less, \$5 for each additional print**

Choose from a variety of auction artwork images to create your own unique photo booth background. Slikati Photography's visual approach blends candid sharp-shooting with fashion magazine artistry, drawing on over a decade's worth of skill anticipating, lighting, and editing images, but never letting wizardry override heart. Photographers Tom and Tonya Seiler have dedicated the evening to create a fabulous take-home photograph to memorialize this celebration of the arts.



## THE ART OF BIDDING (RULES AND TERMS)

- The silent auction is divided into two sections; closing times are listed in this catalog.
- A bid acknowledged by the auctioneer is a legal contract to purchase the item.
- A Guaranteed Purchase amount is located at the bottom of each silent auction bid sheet. When you write your bidder number in the Guaranteed Purchase box the bidding ends, and you agree to purchase the artwork at the stated value.
- MAM shall act as final authority in determining the winning bid.
- MAM reserves the right to withdraw any item at any time without notice before the actual sale.

### Absentee Bidding by Proxy

- Anyone may submit a Proxy Bid by credit card on any lots in the live and silent auctions. Bids will be made on your behalf up to but not exceeding your stated maximum bid amount.
- To place a Proxy Bid, call MAM at 406.728.0447. The deadline for submitting a proxy bid is February 3, 12 PM.

### Payment

- All items must be paid by the end of the evening. Cash, checks, Discover, MasterCard, and Visa accepted.
- Credit card payments will be charged a 4% service charge.
- A 90-day, same-as-cash payment plan is available to MAM members. Sign up for a membership before the live event or add a membership to your evening's total purchase.



Monte Yellow Bird, *He Strikes the Bull*, Colored pencil on original Assessment Roll School District, Silver Bow County, Montana, ca. 1890s (pg 23). ▲

## Art Pick-Up

- Present your receipt at the art pick-up area to claim your artwork. If you are unable to take your artwork home that evening, you may arrange for pick-up at MAM at a later date.
- **All artworks must be claimed by May 31, 2017.**

## Terms of Sale

All sales are final. There will be no exchanges or refunds. MAM does not make any expressed or implied warranties or guarantees on auction items regarding quality or value of items or services. MAM has attempted to describe and catalog all items correctly, but all items are offered and sold "as is" and "with all faults." MAM neither warrants nor represents, and in no event shall be responsible for the correctness of descriptions, genuineness, authorship, provenance, or condition of the items. No statement made in this catalog or made orally at the auction or elsewhere shall be deemed such a warranty for tax purposes or market value. Items have not been appraised unless otherwise noted. By the buyer's purchase, the buyer waives any claim for liability against MAM, its elected and appointed officials, members and employees, sponsors, volunteers connected with the auction, and/or the donor of the item. Neither MAM nor the donor is responsible for any personal injuries or damage that may result from the use of the property or services.



**LIVE  
AUCTION**





**1.**

**Karen McAlister Shimoda**

*The Introverted Approach to Conversation*

Mixed media collage, 10 x 10"

Value: \$600

---

McAlister Shimoda draws her aesthetic from the rhythms and patterns of nature, poetry, literature, and music. She is largely a self-taught artist and has degrees in art history and East Asian studies. In 2016, she presented her solo exhibition, *Field Notes*, at MAM. *Field Notes* will be presented at the new Whitney Center for the Arts in Sheridan, Wyo. in September 2017. McAlister Shimoda currently lives in Portland, Ore., making art full time.



**2.**

**Jerry Rankin**

*Tectonic Shift*

Mixed media on aluminum and board,  
19 x 24"

Value: \$800

---

Rankin was born in Montana in 1934. He graduated from Montana State University with a BS in Fine Art and earned an MFA from the University of Montana. He worked as a commercial and fine artist, and taught art at the college and secondary level. Rankin has exhibited throughout the west. MAM will showcase his drawings in February 2017.



**3.**

**James Todd, Jr.**

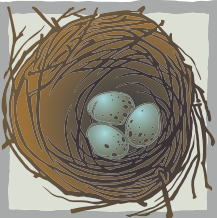
*George Grosz with Boxer – 12/HP*

Wood engraving, 21 x 25"

Value: \$800 / 75% donation

---

Todd's art studies began at the Chicago Art Institute in 1959. He earned an MFA in printmaking from the University of Montana in 1969, where he taught art and humanities until his retirement in 2000. Todd's career includes an extensive history of international exhibitions and the receipt of over 30 national and international awards. Todd's artwork is represented in public and private collections around the world.



NEST

# Collector's Pieces for the Kitchen & Home



**NEST** The Kitchen & Home Store at the Good Food Store  
1600 S. 3rd St. West      Missoula, MT      9am to 8pm, Every Day

**balance - noun**

1. a condition in which different elements are equal or in the correct proportions.



Your Downtown Resource

301 E. Broadway • 542-3333 • www.AxisPT.org



Balance,  
Important  
to Art  
and to  
Your  
Function.



*Proud to support the  
Missoula Art Museum*



Montana owned. National resources. Customized solutions.

Billings ■ Bozeman ■ Butte  
Great Falls ■ Havre ■ Helena  
Missoula 721.7800

azworld.com





**4.**

**David James**

*Sting*

Acrylic medium,  
pigment, rocks and  
plaster on panel, 12 x 12"

Value: \$950

100% Donation

---

James was born in St. Louis and grew up in Los Angeles, Philadelphia, and the Midwest. He received his MFA from the University of Arizona. He was a professor of painting and drawing at the University of Montana for 25 years before retiring in 2009. He lives and paints outside of Missoula and has exhibited his work nationally and internationally throughout his career.



**5.**

**Tim Thornton**

*Tigris*

Acrylic on  
canvas, 40 x 57"

Value: \$800

---

Thornton was born and raised in a small suburb of Los Angeles. He earned his BFA from the California College of the Arts in 1984. He worked at the University of California-Berkeley as a charge scenic artist. In 2005, he relocated to Missoula with his artist wife, Patricia. His large-scale paintings have been shown at the Brink Gallery in Missoula, are in several collections, and have been featured in MAM's benefit art auctions.



**6.**

**Joe Boddy**

*Fitting In*

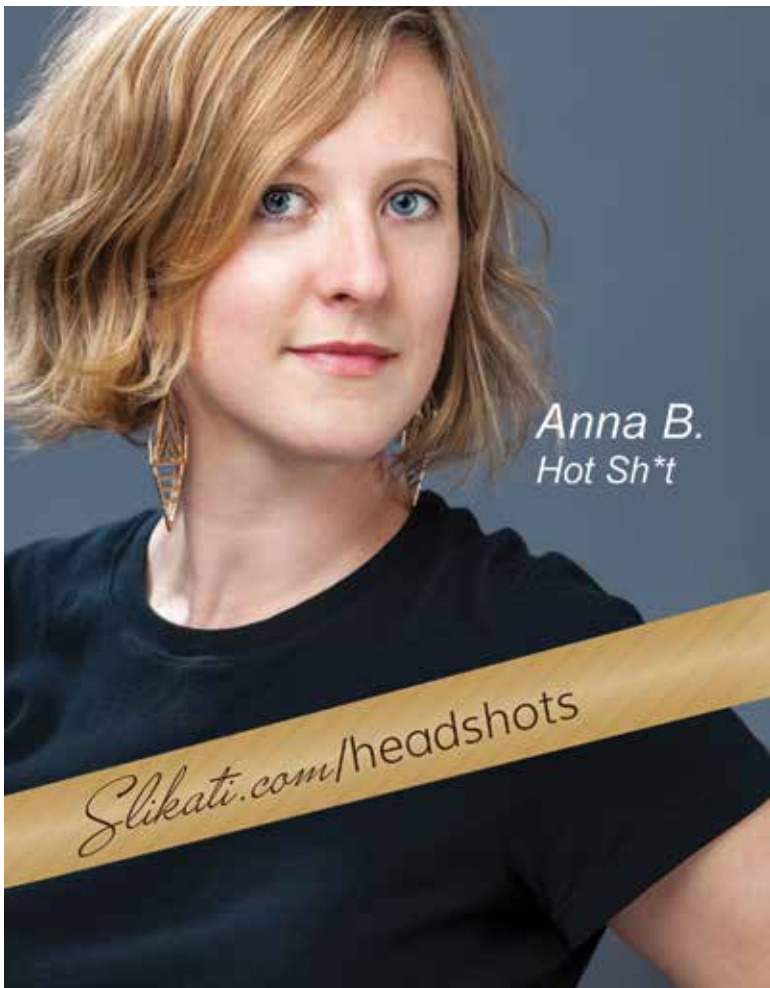
Ceramic, exhaust pipe  
and steel, 16 x 8 x 20"

Value: \$1500

100% Donation

---

For the past 30 years, Boddy has worked as a freelance illustrator for over 29 major publishing houses. In 2013, he began to dedicate his time primarily to sculpture. His three-dimensional work has been shown in several national juried shows, including the prestigious National Sculpture Society's Annual Exhibition. His work is shown in Vickers Collection galleries in Vail and Aspen, Colo., the Mirada Gallery in Denver, and in Arizona by the Rogoway Gallery.



Anna B.  
Hot Sh\*t

*Slikati.com/headshots*

An advertisement for Sushi Hana Downtown. On the left is a vibrant bowl of sushi topped with salmon, tuna, and various vegetables, with chopsticks resting on top. The background is white with a dark wood-grain border at the top and bottom. The text is positioned to the right of the bowl.

Sushi and **Authentic**  
Japanese Cuisine

**寿司花**  
**SUSHI HANA**  
DOWNTOWN

THE FIRST BEST SUSHI BAR IN THE LAST BEST PLACE

406-549-7979  
[www.SushiMissoula.com](http://www.SushiMissoula.com)  
403 N. HIGGINS • MISSOULA, MT

An advertisement for Art Attic Framing and Design. The left side shows a modern interior with a black and tan Eames-style chair, a white door, and three framed artworks on the wall. The right side is a grey panel with text and the company logo.

It's  
*music*  
for your  
eyes

**Art Attic**  
FRAMING AND DESIGN

123 South Ave. West  
406.728.5500  
[www.artatticmt.com](http://www.artatticmt.com)



## 7.

**Beth Lo**

*Don't Shoot*

Slip cast porcelain,

16 x 16 x 4"

Value: \$1200

75% Donation

---

Lo received her MFA in ceramics from the University of Montana in 1974 studying under Rudy Autio. She succeeded him as professor of art in 1985 and was twice honored with the UM's Provost's Distinguished Lecturer Award in 2006 and 2010. She received numerous honors, including the USA Hoi Fellowship in 2009, an NEA Visual Artist Fellowship Grant in 1994, and a Montana Arts Council Individual Artist Fellowship in 1989. Lo plays bass in the Big Sky Mudflaps, Salsa Loca, Western Union, and other ensembles.



## 8.

**R. David Wilson**

*Winter Sun Effect I*

Oil on canvas, 30 x 24"

Value: \$1800

---

Wilson was born in Montana and has lived in Brazil, Spain, and Mexico. He earned a BA in Spanish and a master's degree in the history and literature of the Mexican Revolution. Wilson is a self-taught painter. Recent exhibitions include a series of *plein air* paintings of Honduran market places at Oregon State University and a 2014 show at the Dana Gallery focusing on the beauty and plight of Central American rivers.



## 9.

**Trey Hill**

*Slow Frost*

Porcelain, glazes, 22.5 x 9 x 8"

Value: \$1800

---

Hill is a professional sculptor and associate professor at the University of Montana. He received his BFA from Bowling Green State University and his MFA from San Jose State University. Hill's work is shown in galleries and museums nationally and internationally. His extensive travel and creative experiences include artist residencies at the Archie Bray Foundation, the LH Project in Joseph, Ore., and three separate residencies in China. Hill is currently featured in a two-person exhibit at MAM through May 2017.

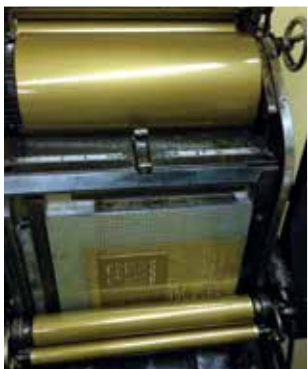


# NOTEWORTHY



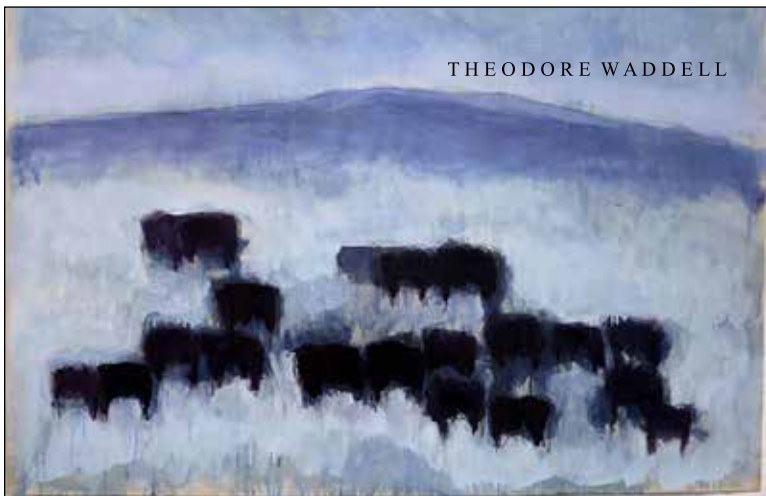
PAPER & PRESS

FROM OUR HANDS ... *To yours*



CUSTOM DESIGN + LETTERPRESS PRINTING IN DOWNTOWN MISSOULA  
WWW.NOTEWORTHYSTORE.COM / (406) 541.6683 / INFO@NOTEWORTHYSTORE.COM

THEODORE WADDELL



VISIONS WEST  
CONTEMPORARY

108 S. Main St. Livingston, MT 406.222.0337  
1715 Wazee St. Denver, CO 303.292.0909  
34 W. Main St. Bozeman, MT 406.522.9946  
130 S. Jackson St. Jackson, WY 307.264.1553

visionswestcontemporary.com | info@visionswestgallery.com



**10.**

**Nancy Erickson**

*The Family*

Oil paint sticks, 28 x 40"

Value: \$2000

Nancy Erickson has been making and exhibiting fabric constructions, paintings, and drawings since the 1960s. She has participated in over 500 group and solo exhibitions. She finds all these media endlessly challenging; but over the years, the themes in her work remain essentially unchanged—individuals coming and living together in the face of vast environmental and spiritual change.

## CLOSE OF SILENT AUCTION SECTION 2



**11.**

**Leslie Van Stavern Millar II**

*Queen Elizabeth the First Time-*

*Travels to Holland Lake*

Gouache on rag paper, 13.5 x 9.5"

Value: \$2000

Millar, a graduate of Mount Holyoke College and C.I.S.I.M., a mosaic school in Ravenna, Italy, has been an independent artist in western Montana for four decades. She taught herself to paint with gouache on paper in 1977 in order to develop a contemporary Persian miniature style. She is the recipient of several grants, most recently from the PROP Foundation and the Montana Arts Council in support of her exhibition *Montana Peepshow Stories* which MAM will travel throughout the state in 2017/18.



**12.**

**William Gotha**

*Black Mountain*

Oil on Belgian

linen, 20 x 30"

Value: \$2200

Gotha minored in fine art at Holy Cross College in Worcester, Mass., and studied painting at the Museum of Fine Art in Boston and the Smith Art Museum in Springfield, Mass. He worked as design director for SAIL Magazine in Boston before launching his painting studio in Andover, Mass.



locally sourced, raw  
ingredients — *always*

# PLONK

W I N E

---

Bozeman + Missoula  
[plonkwine.com](http://plonkwine.com)





**13.**

**Stephanie J. Frostad**

*Plank*

Graphite and oil on wood panel, 16 x 20"

Value: \$2000

---

Frostad studied at the Studio Art Center International in Florence, Italy, and received a BFA from the Maryland Institute College of Art, followed by an MFA from the University of Montana. She exhibited in Canada, China, Italy, and New Zealand and is represented in numerous collections, including at the University of Washington Medical Center, the University of Victoria, and MAM. Locally, she has completed a number of murals that can be found at the Montana Natural History Center and Montana Food Bank.



**14.**

**Don Voisine**

*Petit Noir 3*

Oil on wood panel, 10 x 10"

Value: \$2200 /

100% Donation

---

Voisine was born in Maine and attended the Portland School of Art there. He has lived in New York since 1976 and has exhibited internationally in Vienna, Paris, Milan, Bonn, and Berlin. Voisine's work is held in numerous collections, including the former Corcoran and Peabody Essex Museum. He received an Artist's Fellowship from the New York Foundation for the Arts in 2006 and presented a 15-year survey at the Center for Maine Contemporary Art in 2016.



### **14A. Cellar Package (Value: priceless)**

This special evening for up to 10 people will begin with a cocktail party in MAM's "art cellar," usually strictly off-limits to the public, hosted by Executive Director Laura Millin and Senior Curator Brandon Reintjes. After seeing MAM's eclectic contemporary collection first hand, travel across the street to Plonk for a private cellar dinner featuring a seasonal, five-course menu by chef Olivia Donovan. This incredible dinner will feature wines from around the world paired by sommelier Ben Burda.



"winter's bottom line"

robert moore



"my place"

david wilson



"alluring simplicity"

dudley dana

**dana**  
GALLERY



**15.**

**Simon Winegar**

*Levity*

Oil on canvas, 16 x 24"

Value: \$2300

---

Winegar was born in Utah and grew up in the suburbs of Salt Lake City. He was encouraged by his older brother Seth, also an artist, and the two spent most of their free time drawing. Winegar has exhibited at the Springville Art Museum, the Museum of Church History and Art, and the International Museum of Contemporary Masters of Fine Art.



**16.**

**Kathryn Kress**

*Silly Compass*

Encaustic, beeswax,  
graphite on plaster on  
sheetrock, 32 x 42"

Value: \$2500

100% Donation

---

Kress is a fifth generation Montanan who earned a BFA at the University of Montana in 1971. She has exhibited in the United States and abroad, including at the American Craft Museum, Bellevue Art Museum, the Yellowstone Art Museum, and MAM. Her work is represented in both private and public collections. In years past, Kress has played myriad roles assisting MAM, from assistant preparator to guest curator.



**17.**

**Stephen Braun**

*Tapped Out*

Raku-fired clay,  
30 x 9 x 10"

Value: \$3000

---

Braun has worked in ceramics for over 30 years and has had numerous solo and group shows nationally and internationally. He has lectured and presented demonstrations at many museums, universities, and conferences. His work is in public and private collections and published in text books, magazines, catalogues, and newspapers. *Cause and Effect* is an 80-page book of Braun's work, published by the John Natsoulas Gallery. He teaches at Flathead Valley Community College in Kalispell.



# Gallery 709

"Best Local Artists"

Museum Quality Custom  
Picture Framing  
Since 2007

[www.MontanaArt.com](http://www.MontanaArt.com)

541-7100

Montana Art & Framing 709 Ronan Street, Missoula

We Proudly Support  
Missoula Art Museum!

**OZ**  
architects

A regenerative solution  
for restored intimate  
health that really works?

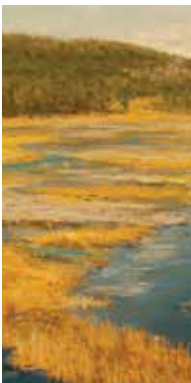
*It's true, and it's exclusively available in  
Montana at Five Valleys Urology, Missoula.*

**MonaLisa Touch**  
*quick, painless, life-changing!*

[FiveValleysUrology.com](http://FiveValleysUrology.com)

TO LEARN MORE, CONTACT **406.728.3366**

Jennifer O'Connor, CCRC, RN Program Coordinator at



**Bobbie  
McKIBBIN**



**David  
HILTNER**



**Hadley  
FERGUSON**

**NOW  
THRU  
2/25**



[radiusgallery.com](http://radiusgallery.com)



**18.**

**Ellen Kuntz**

*Grand Prismatic*

Archival photographic  
print, 40 x 60"

Value: \$3000

100% Donation

---

Kuntz was born in Great Falls and raised in Billings. She is primarily a self-taught photographer who completed an artist residency in Berlin. This is the second year that she has participated in MAM's benefit art auction, and she has also been chosen for art auctions at the Nicolaysen Art Museum and Yellowstone Art Museum. Kuntz is represented at the Stapleton Gallery in Billings.



**19.**

**Paul Guillemette**

*District One*

Plywood and spray  
paint, 32 x 46 x 5"

Value: \$3500

---

Guillemette lived and made art in Montana for 22 years. He spent much of that time in Missoula and Butte. At the University of Montana, Guillemette studied under Dennis Voss, Beth Lo, and Tip Toland. He moved to Los Angeles in 2002. He has exhibited nationally and has work in numerous museum collections in Montana.



**20.**

**M. Scott Miller**

*Red Light*

Acrylic on canvas, 36 x 36"

Value: \$3500

---

Miller was raised in Missoula and earned a BFA in illustration from the Pratt Institute in Brooklyn. For two decades, Miller worked as a freelance illustrator in New York City, creating cover art for prestigious magazines, including the *New Yorker*, *Money*, and *Metropolitan*. In 2005, he returned to Missoula, where he lives and works today. In 2012, Miller was featured in a solo exhibition at MAM.



**GL**  
**GRIZZLY**  
**LIQUOR**

*Big Sky. Big Selection.*

Widest selection of  
**artisan and specialty spirits**  
in the Northwest.

110 W. Spruce St., Missoula • 406.549.7723  
[www.GrizzlyLiquor.com](http://www.GrizzlyLiquor.com)

**FREE**  
**ADMISSION.**

**FREE**  
**THINKING.**

Brought to you by  
MISSOULA  
**Independent**

Proud sponsor of

 **MISSOULA**  
**ART**  
**MUSEUM**



**21.**

**Dennis Sloan**

*Megan's World*

Oil on canvas,

32 x 64"

Value: \$3800

Sloan was born in Hardin, Mont. in 1946. After an honorable discharge from the U.S. Army in 1967, he studied art under Ben Steele and Helen Northcutt at Eastern Montana College-Billings. Sloan spent a year in Los Angeles studying advertising design at the Art Center College of Design before returning to Montana. He finished his formal art training at the University of Montana, where he was mentored by Rudy Autio, Don Bunse, and Walter Hook.

## THE MOMENT OF GIVING & GENEROSITY SWEEP

To celebrate a year of milestones and a legacy of education at MAM, our Moment of Giving is dedicated to continuing our cultural work to promote artists and creativity in our community for generations to come! These gifts are 100% tax-deductible and, more importantly, will help ensure free expression and free admission for all. The Moment of Giving is your chance to raise your paddle in generous support for your contemporary art museum!

The Generosity Sweep is the opportunity to see what 100% participation looks like in a room full of art supporters. Raise your orange bid card to support MAM with a \$25 gift, then hand it to one of the volunteers collecting cards and you will be entered in a drawing to win one of two, All Access Passes to the Big Sky Documentary Film Festival in Missoula February 17–26!

**BIG SKY**  
DOCUMENTARY  
FILM FESTIVAL



[bigskyfilmfest.org](http://bigskyfilmfest.org)

**22.**

**Monte Yellow Bird**

*He Strikes the Bull*

Colored pencil on original

Assessment Roll School District,

Silver Bow County, Montana, ca.

1890s, 11 x 21"

Value: \$3500



Yellow Bird lives in Colorado and is a member of the Arikara and Hidatsa Nation from White Shield, North Dakota. He earned a BFA from Minot State University and is an alumnus of the Institute of American Indian Arts in Santa Fe. He has received awards at the Santa Fe Indian Art Market; Autry Museum of the American West, Los Angeles; Eiteljorg Museum, Indianapolis; and Heard Museum in Phoenix, Arizona. He has exhibited internationally, including at the Imago Mundi exhibition in Venice.



“Creativity starts in the *home* and lasts for a lifetime.”  
-Surangi



**ERA LAMBROS**  
REAL ESTATE

*Julie Gardner*  
(406)532-9233  
Realtor, J.D., MPA  
jgardner@ERALambros.com  
www.JulieGardnerProperties.com







**23.**

**Kaori Takamura**

*Typewriter Keys*  
Acrylic on canvas,  
stitching, 42 x 62"  
Value: \$3200

---

Takamura was born in Tokyo. A graphic and packaging designer by trade, she balances the interrelationship between craft, design, and art through her explorations on canvas. Takamura uses traditional fabric, embroidery, and lace patterns, as well as icons of everyday objects to comment on women's roles and daily life experiences. In 2008, she completed two pieces of public art that are installed in the University of Montana School of Journalism.



**24.**

**Shawna Moore**

*Tempest*  
Wax, resin, pigments  
on panel, 20 x 20"  
Value: \$2500

---

Moore lives and works in Whitefish, Montana. She has had solo exhibitions at galleries in Minneapolis, Telluride, Santa Fe, and Park City. Her numerous group exhibitions include the last two Montana Triennials and the Northwest Encaustic Invitational, all at the Missoula Art Museum. She currently works directly with designers and architects to create site-specific artworks in commercial and residential spaces.



**25.**

**Alan McNeil**

*Front Street Market,  
Drummond, Montana*  
Oil on canvas over  
panel, 32 x 40"  
Value: \$2800

---

McNeil has exhibited across the West for over 25 years, including at the Yellowstone Art Museum, Hockaday Museum of Art, and C.M. Russell Museum. His paintings are in numerous collections, including University of Washington Medical Center, North Idaho College, and Washington state Percent-for-Art. He was awarded first place in painting at the 2014 Scottsdale Arts Festival. McNeil is represented by galleries in Bozeman, Coeur d'Alene, and Spokane. He is an alumnus of the University of Montana and lives in Yaak, Montana.



Teamwork. Community. Excellence.

CERTIFIED PUBLIC ACCOUNTANTS

BOYLE. DEVENY. MEYER. ■ Serving Western Montanans since 1952

305 S. 4th East Missoula, MT ■ 721-3555 ■ [www.bdmcpa.com](http://www.bdmcpa.com)

# BIG SKY COMMERCE

SINCE 2003

MOVING MONTANA MERCHANTS ACROSS GLOBAL MARKETS

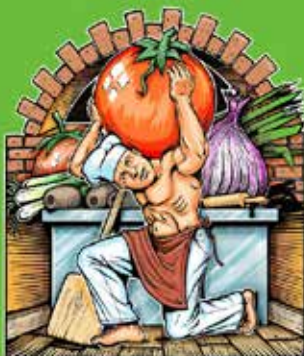


- 24/7 Customer Service
- EMV Chip Card Technology
- Secure, Real-Time Transactions
- In Store, Online and Mobile Processing
- Apple Pay and Google Wallet
- PCI-Compliance

Contact Big Sky Commerce for a FREE

Merchant Account Review to see how much you can save!

2809 Connery Way, Missoula • 406.327.0611 • 866.327.0611 • [bigskycommerce.com](http://bigskycommerce.com)



biga pizza

## Brick Oven Pizza and Restaurant

Local, Seasonal, and  
Organic Ingredients.  
Voted Missoula's Best  
Pizza for a Decade!

241 West Main Street  
(406) 728-2579

# WHAT WOULD YOU BID TO KEEP IT CLEAN AND HEALTHY?

*THE RIVER NEEDS YOU. GIVE TODAY.*



[CLARKFORK.ORG](http://CLARKFORK.ORG)



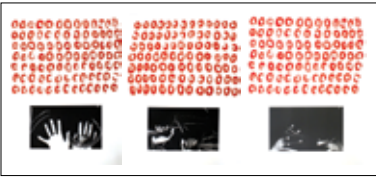
**26.**

**Lisa Autio**

*Five Horses*

Mixed media, acrylic on  
cradled hardboard, 18 x 48"  
Value: \$2600

Autio is a native of Helena and grew up in Missoula, where she resides. She returned to Montana after spending 22 years working and raising a family in Kentucky and Wisconsin. She has a BA in art from the University of Washington and a master's degree in library and information science from the University of Wisconsin-Milwaukee. She has exhibited at the Holter Museum of Art and Turman Larison Contemporary in Helena.



**27.**

**Sara Siestream**

*Thanks Giving/Giving Thanks:*

*Unarmed, Prayer, Non-violent,*  
*12/20*

Lithographs, 30 x 22" each

Value: \$2000 / 100% Donation

Siestream is from the Umpqua River Valley in southwestern Oregon. She graduated Phi Kappa Phi with a BS from Portland State University in 2005. She earned an MFA with distinction from Pratt Art Institute in 2007. She is represented by Augen Gallery in Portland, shows her work nationally, and is included in the MAM Collection. She teaches studio arts at PSU and traditional indigenous weaving practices for the Confederated Tribes of Coos, Lower Umpqua, and Siuslaw Indians.



**28.**

**Sheila Miles**

*Big Flakes*

Oil on canvas, 40 x 32"

Value: \$2700

Miles is a full-time art teacher and painter in Santa Fe, New Mexico. She spent 26 years in Montana, making an impact on the arts statewide. She taught art in the state universities in Billings, Bozeman, and Missoula, and was curator at the Yellowstone Art Museum from 1988 to 1990. She's had more than 100 solo exhibitions, and recently her work was purchased for the public collection of the state of New Mexico. Her solo exhibition, *Light and Shadow*, will open at MAM on February 15.

**Red Rooster**  
*gracious home and gifts*



333 North Higgins Avenue  Missoula, Montana 59802  
406.543.7777

**UPTOWN  
OPTICAL**

**VOTED #1 BEST  
PLACE TO BUY  
EYEGLASSES**



**111 N Higgins Ave • Missoula  
327.9988 • uptownoptical.com**

**Rocky  
Mountain**  
Moving & Storage, Inc.

**THE ART MOVERS MAM HAS  
TRUSTED FOR OVER 20 YEARS.**

**We'll will deliver your art purchase(s) to you on Monday, 6 February  
for \$50. All proceeds to benefit MAM. Ask at auction check-out.**



**Lori M. Aleksic, D.D.S.  
Ryan K. Huckleby, D.M.D.  
Kyle P. Goroski, D.M.D.**

**Twin Cranes Dental Group, PLLC  
1227 South Higgins Avenue  
Missoula, Montana 59801  
(406) 728-9442 • Fax: 728-0580  
contact@TwinCranesDental.com  
www.TwinCranesDental.com**



**29.**

**Gregory Wilhelmi**

*Make America Great*

*Again*

Oil on panel, 16 x 32"

Value: \$1800

Wilhelmi attended Montana State University and MSU-Billings, before earning a BFA from the University of Denver. He's had solo exhibitions at the Yellowstone Art Museum, Nicolaysen Art Museum, and Bismarck Art and Galleries Association. Wilhelmi's work is published by Editions Limited in San Francisco. His studio is in on the property of his historic home near Roundup, Montana.



**30.**

**George Gogas**

*Judith Basin Encounter: When*

*Charlie and Pablo Watched*

*Donald Take a Tumble*

Acrylic on board, 20 x 20"

Value: \$2000

Gogas is one of Missoula's most well-established painters. He earned a BA from the University of Montana and an MFA from the University of Washington. Gogas has been an art teacher and served on several art commissions and boards. He has exhibited in dozens of group and solo exhibits throughout the region and nation, and his work is in numerous private and museum collections, including MAM and the Buffalo Bill Historical Center in Cody, Wyo.



**31.**

**Holly Andres**

*Summer of Hornets #4*

*(Drowning Hornets)*

C-print mounted on

Sintra, 20 x 30"

Value: \$1800 /

100% Donation

Andres is a fine art and editorial photographer in Portland, Ore. She was born and raised in Missoula and earned a BFA from the University of Montana and her MFA from Portland State University. MAM hosted her first solo museum exhibition in 2008. She is represented by Robert Mann Gallery, New York; Jackson Fine Art in Atlanta; and Hartman Fine Art; Portland. Her mid-career survey exhibition, *The Homecoming*, was featured in 2013 at the Hallie Ford Museum, Salem Ore., and at MAM in 2016.



*Oral Surgical Associates*



*Practice Limited To Oral and Maxillofacial Surgery*

**Eugene F. Morris, DDS**  
**Armando A. Gama, DDS**

[www.oralurgicalassociates.com](http://www.oralurgicalassociates.com)

**406-728-6840**



Missoula Women's Health Montana Robotic Surgery

Scott C. Wyman MD

2835 Fort Missoula Rd, Suite 202

Missoula, MT 59804

(406) 728-4292

[www.montanaroboticsurgery.com](http://www.montanaroboticsurgery.com)



**32.**

**Josh DeWeese**

*Medium Covered Jar*

Wood-fired stoneware,

14 x 14 x 20"

Value: \$1500

---

DeWeese is an associate professor of art at Montana State University. He served as resident director of the Archie Bray Foundation for the Ceramic Arts in Helena, Montana from 1992 to 2006. He holds an MFA from the New York State College of Ceramics at Alfred, and a BFA from the Kansas City Art Institute. DeWeese has exhibited and taught workshops internationally, and his work is included in numerous public and private collections.



**33.**

**Chris Autio**

*A Walk in the Park*

Oil-colored silver

gelatin print,

29.5 x 37"

Value: \$1800

---

Autio is a life-long Missoulian. He attended Montana State University, where he earned a BS in photography and a BA in English literature in 1989. He captures landscapes on film with a large-format camera and prints in the darkroom. Recent exhibits include *Hands On*, a portrait show at MAM, and an exhibition of hand-colored photographs at the Turman Larison Contemporary in 2014.



**34.**

**Janet Sullivan**

*Evening Sparkle*

Pastel on paper, 12 x 24"

Value: \$1600

---

Sullivan's love of painting led her to a 40-year career as an artist. Her work has been included in invitational art shows across the West, including the C.M. Russell Auction, Coeur d'Alene Miniature Show, and 14 years of annual Paint-Outs with the Dana Gallery. Recently she was chosen to be an associate member of the Women Artists of the West. Sullivan was awarded two National Parks Service artist-in-residencies.

*Make Montana Home*



Brian Christianson Photography

*Specializing in Luxury Montana Homes, Ranches and Vacation Properties.*

Glacier

**Sotheby's**  
INTERNATIONAL REALTY

Dawn Maddux

406.550.4131  
dmaddux@glaciersir.com  
dawnmaddux.glaciersir.com



# Rockin Rudy's



Missoula, Montana





**35.**

**Elizabeth Hughes  
Bass**

*Coal Train*

Oil on board, 24 x 18"

Value: \$1400

---

Bass paints cityscapes, portraits, and landscapes. Her work is represented in several Montana galleries, as well as in Oxford, Miss., and New Orleans. Her latest solo show was a series of related figures and felons entitled, *Postures* in Fairhope, Ala. She has lived in northwest Montana since 1987.



**36.**

**Tom Thornton**

*Herringbone Hill*

Oil on canvas,  
24 x 18"

Value: \$1000

---

Thornton was born in Sidney, Mont. He studied fine art and bronze casting at Montana State University. For 25 years he ranched, logged, and maintained a bronze studio in the Judith Mountains north of Lewistown. He lives and makes art in South Cottonwood Canyon outside of Bozeman, producing work that explores themes of ranching, memory, personal experience, and the natural world.



**37.**

**Dudley Dana**

*Alluring Simplicity*

Digital painting,  
40 x 50"

Value: \$1200

100% Donation

---

Dana studied photography at the University of Montana while working on his doctorate in clinical psychology in the early 1980s. He was an artist-in-residence in Glacier Park in 2000 and at the Ucross Foundation in Wyoming in 2002. His work is part of a traveling exhibition with Oregon State University. He and Candace Crosby own and operate Missoula's longest-running contemporary art gallery, Dana Gallery.

# DOWN TO A FINE ART

With jaw-dropping **new arrivals** and **classics** that never go out of style, our collection of brands is a work of art.



ATHLETA



WHITE  
HOUSE

BLACK  
MARKET

francesca's

GYMBOREE

chico's



COME SEE WHAT'S IN STORE.

*Missoula's Own*  
**SOUTHGATE  
MALL**

shopsouthgate.com





**38.**

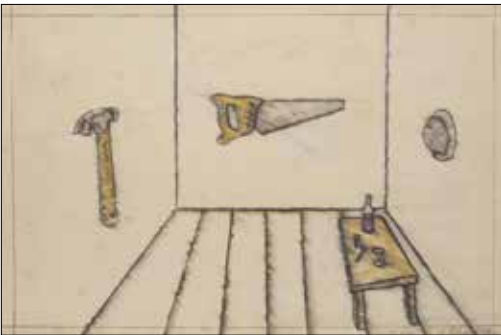
**Tom Foolery**

*Sacks-o-phones*

Mixed media assemblage,  
5.5 x 4.5 x 2.5"

Value: \$900

Tom Foolery attended Oregon State and the University of Washington, where he got the "third degree" before dropping out. His extensive solo career includes exhibits at MAM, the Hallie Ford Museum in Salem, Ore., as well as numerous national galleries, including the Whitney Museum of American Art. He has been awarded commissions from the Montana Arts Council Percent for the Arts in 2012 and the Washington State Arts Council in 2006. He is also the recipient of Montana Art Council's Visual Arts Fellowship.



**39.**

**Stephen  
Glueckert**

*Installation*

Cattle marker on  
paper, 30 x 40"

Value: \$900

100% Donation

Glueckert was born in Missoula and raised in Great Falls. He was MAM's curator for 23 years before he retired in 2015. His survey exhibition, *All Mixed Up*, opened at MAM in 2016 and will travel to museums and galleries around the region through 2018. Glueckert lives in Missoula with his wife, artist Bev Beck Glueckert, and continues to be a vibrant leader in the local and statewide arts community.



**40.**

**Cathryn Mallory**

*Meadow*

Vintage linoleum, shingle,  
and copper wire on panel,  
12 x 23.5"

Value: \$750

Mallory is a professor of art and director of the Gallery of Visual Arts at the University of Montana. She received her BFA in fiber from Northern Illinois University in DeKalb and an MFA in sculpture from the University of Oklahoma in Norman. She has served as a juror for numerous exhibitions for various museums and universities, most recently at Boise State University, Idaho. Mallory recently had solo exhibitions at the South Dakota Art Museum in Brookings and Oats Park Art Center in Fallon, Nev.



# SILENT AUCTION



## SECTION 1 WILL CLOSE BEFORE LIVE AUCTION #1



**1.**

**Jill Brody**

*Autumn Nocturne*

Archival digital

image, 15 x 30"

Value: \$800

75% Donation

---

Brody was born and raised in New York, attended Antioch College, and graduated from the University of Illinois. She has graduate degrees from Harvard Divinity School and the Art Institute of Boston. She has had over a dozen solo shows, including *Hidden in Plain Sight* at MAM in 2014, which continues to travel the country. In 2004, she published *Drummond: Ranch Life in the West*, and has two more publications forthcoming. She lives in Providence, R.I.



**2.**

**Eva Champagne**

*Composition: Selective Memory*

Ceramic, 19 x 19 x 1"

Value: \$900/ 75% Donation

---

Champagne grew up in Hong Kong. She received her BA from Humboldt State University and completed post-baccalaureate studies at the University of Florida. In 2009, she earned an MFA from the University of Montana. She has been a resident artist at AIR Vallauris in France, Guldagergaard International Ceramic Research Center in Denmark, Red Lodge Clay Center, The Clay Studio of Missoula, and Gaya Ceramic Art Center in Bali, Indonesia, where she returned in the summer of 2016 to co-teach a soda kiln building workshop.



**3.**

**J.M. Cooper**

*Club Moderne, Anaconda, MT*

Silver gelatin print, 4 x 5"

Value: \$150

100% Donation

---

A Montana native, Cooper's passion is documenting Montana architecture that is in danger of disappearing, such as the grounds at the Archie Bray Foundation and Deer Lodge Prison. He has focused on black-and-white documentary photography for more than 30 years. Exhibited widely throughout Montana, Cooper's work is also in many private collections. His images were published in the 2008 collaboration with historian Ellen Baulmer called *Dark Spaces: Montana's Historic Penitentiary at Deer Lodge*.



Locally Owned.  
Locally Operated.

Trail 103.3 fm  
[www.Trail1033.com](http://www.Trail1033.com)



## Your **FREE**, Online Community Events Site

Music. Art. Sports. Kids. Food.  
Education. Family. Business.  
Movies. Seniors. **The Missoula Art Museum.**  
And More...

*Post an Event today. Find an Event today.*

MissoulaEvents.net | Missoula Indoor Ads  
BozemanEvents.net | HelenaEvents.com  
BitterrootEvents.net | FlatheadEvents.net  
OutpostEvents.net | EventsInButte.com  
683Events.com | WSSAreaEvents.com  
MissionValleyEvents.com | GreatFallsEvents.net  
PintlerEvents.net



**4.**

**Kate Davis**

*Belted Kingfisher*

Drypoint etching, gouache  
on Rives BFK paper, 11 x 8"

Value: \$200

100% Donation

---

Davis graduated in zoology from the University of Montana in 1982, and started the successful educational program, Raptors of the Rockies, in 1988. While her passion is photography, she is also the author and illustrator of six books on birds. Davis learned etching from Don Bunse in 1989 and welding from Bill Ohrmann in 2004. Davis and Bev Beck Glueckert have conducted an annual Birds and Art Camp for kids at MAM for over a dozen years, where Glueckert introduced drypoint etching on plastic to Davis.



**5.**

**GiGi Don Diego**

*Unexpected Guests to the  
Garden Party*

Acrylic on canvas, 29 x 24"

Value: \$1,200

---

Don Diego was born in Milwaukee, and is primarily a self-taught artist. She enjoys experimenting with different techniques and ideas for her unique images. She creates paintings and collages for private collections, group exhibitions, and solo shows throughout Montana. Don Diego lives in Stevensville, where she takes inspiration from her growing family and the Bitterroot Valley.



**6.**

**Laurel Fletcher**

*Delta*

Wood panel,  
foamcore, acrylic  
paint, 16 x 16"

Value: \$350

100% Donation

---

Fletcher grew up in Wisconsin and lives in Madison. As a youth, she frequently visited Missoula in the summer to see relatives. She began making layered dot paintings as a child, using glossy tempera on corrugated cardboard. Fletcher continues to use dots as a favorite motif and repeats it in each new medium she learns, including bead embroidery, engraving, painting, and ceramics. Recent exhibitions include shows at the University of Wisconsin Memorial Union Class of 1925 Gallery, Overture Center for the Arts, and Goodman Center Ballweg Gallery.



LAUREL CREEK  
*clothing · accessories · gifts*  
117 WEST FRONT STREET  
MISSOULA, MONTANA 59802  
406.721.5368



fresh  
natural cleaners

1132 SW Higgins, Ste. 220  
Missoula, MT 59801  
406.542.8100



610 s. higgins ave. missoula, mt 406.540.4481

clyde  
coffee

hours: monday-friday 6-6 saturday-sunday 8-6





**7.**

**Margo Geddes**

*Log Jam*

Silver gelatin print,

10 x 10"

Value: \$250

---

Geddes holds an MFA from the University of Oregon-Eugene. She currently lives in Missoula, where she pursues photography, art, and horticulture. Her artistic interests combine craft, fine art, gardening, and design, which inform photographs that reflect her interest in the environment and world around her.



**8.**

**Robert Harrison**

*Rain Dance and the Mystery of the Water Woman*

Repurposed porcelain plates with ceramic decals, china paint, and gold luster, 10.5 x 21.5 x 1"

Value: \$600

100% Donation

---

Harrison lives and works in Helena. He is a member of the International Academy of Ceramics, Geneva. In 2008, he was awarded the Meloy Stevenson Award of Excellence from the Archie Bray Foundation and honored as an NCECA Fellow in 2011. His book, *Sustainable Ceramics: A Practical Guide*, was published by Bloomsbury in the fall of 2013. He recently completed a large-scale sculpture for the 47th Congress of International Academy of Ceramics Barcelona 2016 and is currently working on future projects in Denmark, Poland, and China.



**9.**

**Amanda Jaffe**

*Color*

Porcelain, 6 x 4"

Value: \$300

---

Jaffe received her BFA from Indiana University and MFA from the University of Montana. She was a resident and visiting artist at the Archie Bray Foundation for the Ceramic Arts in Helena. She taught ceramics at Ohio Wesleyan University, Ohio State University, New York State College of Ceramics at Alfred University, and the University of Illinois. She retired from teaching in 2011 after spending 26 years at the New Mexico State University-Las Cruces.



**10.**  
**Gesine Janzen**  
*Pierre Road*  
Woodblock print,  
22 x 30"  
Value: \$750  
100% Donation

---

Janzen was born in Newton, Kan. She studied at Bethel College, the University of Kansas, and received her MFA from the University of Iowa. Her work has been exhibited nationally and internationally, and most recently at the MAM and the International Print Center in New York. Her work is also housed in numerous corporate and public collections, including the Artist/Printmaker Research Collection at the Museum of Texas Tech University. Janzen is an associate professor of art and head of printmaking at Montana State University.



**11.**  
**Steven Krutek**  
*Pulling in for a Land Grab*  
Mixed media, 10 x 10"  
Value: \$300  
75% Donation

---

Krutek studied at Colorado College, the University of Montana, SALT Institute for Documentary Field Studies, and Pacific Northwest College of Art. One of five photographers selected to present work at the Society for Photographic Education's 43rd national conference in Chicago, he has exhibited at Project Basho in Philadelphia and in Tokyo at Ricoh's RING CUBE gallery. He teaches at the UM School of Art and was one of this year's Fifth Grade Art Experience teachers at MAM.



**12.**  
**Steve Muhs**  
*Cigarette/Rainbow*  
Inkjet print on paper, 11 x 8.5"  
Value: \$100  
100% Donation

---

Muhs was born in Illinois. He received a BS from the University of Montana-Western and an MA in art from Eastern Illinois University. He has exhibited at Aunt Dofe's Hall of Recent Memory in Willow Creek, Montana, and had a solo exhibition at MAM in 2010. Since moving to Montana in the early 1990s, Muhs has lived in several different communities throughout the state, including Dillon, Billings, and Wolf Point.



**13.**  
**Courtney Murphy**  
*Wave*  
Earthenware,  
17.5 x 38.5 x 1"  
Value: \$350

---

Murphy began working with clay while living in Brooklyn, New York, and moved to Portland to study ceramics at Oregon College of Art & Craft. In 2009, she moved to Helena for a two-year residency program at the Archie Bray Foundation. She also completed residencies at Red Lodge Clay Center and the Clay Studio of Missoula. Murphy shares a studio space in the Brunswick building and remains actively involved with the Clay Studio.



**14.**  
**Trevor Nelson**  
*The Wild*  
Archival print on  
aluminum, 16 x 20"  
Value: \$350

---

Nelson completed a degree in architecture before beginning a long career in the fields of urban and residential design in Portland, Ore. Originally a landscape and architectural photographer, Nelson recently returned to his native Montana to pursue a degree in photography at Montana State University.



**15.**  
**Ladypajama**  
*My God Bird*  
Wallpaper and pen,  
6 x 11.5"  
Value: \$125

---

Ladypajama is from Missoula, where she belongs to the art collective VonCommon. She has no formal art education, but holds a degree in journalism from the University of Montana. Her works were recently shown at the Apex Gallery at the South Dakota School of Mines and Technology in Rapid City, and locally at Clyde Coffee and Zootown Arts Community Center's annual Day of the Dead Art Show.



**16.**

**Jody Paulson**

*Security Blanket*

Inked collage, 12 x 12"

Value \$400

100% Donation

---

Paulson was born and raised in a farming family in northeastern Montana. She taught K-12 art for decades in both the public and private school systems and art education methods at the University of Montana. She received a BFA with art education certification and a degree in Management Information Systems combining art, curriculum, and instruction with Native American studies from the University of Montana. She currently resides in Carbondale, Ill.



**17.**

**Whitney Polich**

*Suitable Distances 02*

Graphite on vellum,  
9 x 12"

Value: \$150

100% Donation

---

Polich received a BFA from the University of Montana in 2008 and a certificate in Elementary Education from the University of New Mexico. She went on to earn an MFA from the Sam Fox School of Design and Visual Art, Washington University in St. Louis. After graduating, she worked with the Art Mobile of Montana, a traveling contemporary art outreach program for rural communities and schools. Her exhibit history includes the Mildred Lane Kemper Art Museum, the New York Center for Photographic Art, and Paris Gibson Square Museum of Art.



**18.**

**Jared Shear**

*Cruel White Water*

Oil on board, 8 x 8"

Value: \$250

---

Shear was born in Missoula and received a degree in animation from the Art Institute of Seattle in 1997. Shear has had notable exhibitions at the Lewis-Clark State College Center for Arts & History in Lewiston, Idaho, and a solo show at MAM in 2014. His work has been featured in *Artist & Illustrator* magazine. He regularly takes *en plein air* painting to its extreme, hiking for miles with his oils to inaccessible vistas. He lives and works in Thompson Falls.



**19.**

**Cynthia St. Charles**

*Red Cruciform #1*

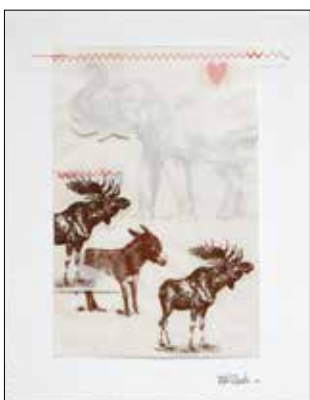
Acrylic, block print, collage  
on wood panel, 10 x 10"

Value: \$150

100% Donation

---

St. Charles is a Billings artist known for art quilts with strong surface design techniques that exemplify her love of nature. She has been published several times in *Quilting Arts*, and was featured on the December 2011 cover. She shows regularly in the Studio Art Quilt Associates traveling exhibitions and has curated exhibitions for the group, including *Broad Spectrum* at Rocky Mountain College-Billings and *Balancing Act*, which is circulating currently.



**20.**

**Patricia Thornton**

*Dawn*

Screen print and  
collage, 14 x 11"

Value: \$295

---

Thornton earned a BA from Sonoma State University, graduating cum laude. Since then, she has worked as an artist, art instructor, and curator. She is the adult program director for the Zootown Arts Community Center in Missoula. Her work was featured in a solo exhibit at MAM in 2014.



**21.**

**Monica Thompson**

*Time's Forgotten Space*

Textile collage, 18 x 18"

Value: \$300

---

Thompson holds an MA in art education and teaches elementary art in the Missoula County Public Schools. She studied fibers and graphic design at the University of Michigan and textiles at the Penland School of Crafts. Much of her work comprises hand-dyed fabrics. She often employs the Japanese technique of shibori, a dyeing process using folding or binding.

## SECTION 2 CLOSES AFTER LIVE AUCTION #10



**22.**

**Jason Bohman**

*Fruity Pebbles*

Ink on paper, 30 x 40"

Value: \$450

---

After a two-year stint in North Carolina, Bohman recently returned to Missoula, where he earned a BFA in drawing with a minor in art history from the University of Montana in 2013. He says, "Above all else, I love the directness and control of drawing in all its forms." Bohman is also active making prints, billboards, paintings, and graphic design projects.



**23.**

**Christiane Buell**

*Fading Traces*

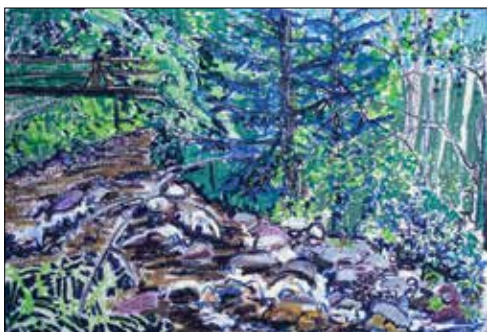
Oil on canvas, 16 x 16"

Value: \$750

100% Donation

---

Buell was born and raised in Switzerland. She studied ballet at the Swiss College for Dance and Ballet in Zurich, and the Alvin Ailey Dance School in New York City. When an automobile accident interrupted her aspirations of becoming a professional dancer, she turned to painting. She studied at the Swiss College of Fine Arts in Zurich, Cuesta College—San Luis Obispo, and the California College of Arts and Crafts. Buell came to Montana as an artist-in-residence at the Montana Artists Refuge in Basin and now lives in Helena.



**24.**

**Tina DeWeese**

*Cottonwood Creek*

Oil pastel on  
watercolor paper,  
16.5 x 24"

Value: \$450

---

DeWeese has a studio in her home in Cottonwood Canyon south of Bozeman. She creates jewelry, batik, collages, cast bronze, photography, paintings, and bent-wire sculpture. She received a BA from Evergreen State College, was a founding member of the artist cooperative RUBEDO in Bozeman, and taught elementary school art for a number of years.



**25.**

**Aaron Johnson**

*Spring Clouds*

Oil on linen, 12 x 14"

Value: \$625

---

Johnson grew up in a small southern Idaho town as the son of a high school art teacher. He lived for two years in France, where he visited museums throughout the country. Upon returning, he attended Pacific Northwest College of Art in Portland, where he received a BFA in painting and printmaking. In 2011, he received his MFA from the University of Idaho-Moscow. Johnson currently teaches at the Lewis-Clark State College Center for Arts & History in Lewiston, Idaho.



**26.**

**Jodi Lightner**

*Unconscious Structure – House*

Acrylic and ink on panel,  
12 x 12"

Value: \$500

75% Donation

---

Lightner is Assistant Professor of Art at Montana State University-Billings. She received an MFA in painting from Wichita State University in 2010. She has participated in artist residencies at the International School of Painting, Drawing, and Sculpture in Montecastello diVibio, Italy; Vermont Studio Center; and Ucross Foundation in Wyoming. Lightner was the emerging artist-in-residence at Penn State in Altoona in 2012.



**27.**

**David Miles Lusk**

*Nature as Man*

Acrylic, relief print on paper,  
acrylic image transfer, graphite,  
colored pencil on panel, 51 x 27"

Value: \$1,000

100% Donation

---

Lusk is an artist working and living in Missoula, where he received his BFA with an emphasis in printmaking from the University of Montana in 2014. Following his graduation, he collaborated with the late poet Eduardo Chirinos to illustrate the Spanish language book *Treinta y cinco lecciones de biología (y tres crónicas didácticas)/Thirty-Five Zoological Lessons (and other Didactic Poems)*. Lusk works at HomeResource and exhibits regularly throughout the area.



**28.**

**Cristina Simona Marian**

*The Collectors*

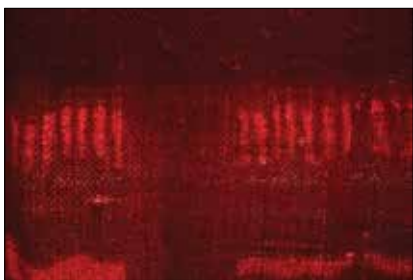
Acrylic on canvas,

24 x 24"

Value: \$825

---

Marian was born and raised in Romania. She received her BFA from the National University of Art in Bucharest. She traveled, taught, and exhibited throughout Europe, Asia, Africa, and North America in her early career, settling in Montana in 2014. Her works were shown recently in group exhibitions at Turman Larison Contemporary in Helena and Waterworks Art Museum in Miles City. She lives in Bozeman.



**29.**

**Sarah Moore**

*Pining for Red*

Archival inkjet

print, 18 x 24"

Value: \$550

100% Donation

---

Moore is a photographer based in Missoula. She grew up in South Dakota and received her BFA at Rhode Island School of Design. She is currently an MFA candidate at the University of Montana and co-director of FrontierSpace Art Gallery, an alternate graduate student-run space in Missoula. Her work has been shown nationally and this past summer, she participated in an artist residency in Berlin.



**30.**

**Darla Myers**

*Pod Navigation*

Encaustic, mixed media,

21 x 21"

Value: \$750

---

Myers was born and raised in Roseburg, Ore. She is primarily a self-taught artist. She was a founding partner of the Artist Studio Co-Op & Gallery-Upstairs Studio in Anchorage, Alaska. She is represented by Tripp Studios in Bozeman and the B. Hive Gallery and Cactus Blossom Collective in Livingston. She was a 2015 participant in the Montana Artrepreneur Program (MAP). She teaches encaustic painting in her Bozeman studio.





**31.**

**Tim Nielson**

*Louis Riel, Revolutionary*

Acrylic on panel, 48 x 32"

Value: \$400

100% Donation

---

Nielson has a BA in art history from Carleton College in Northfield, Minn., and has taught high school art in Missoula for the last two decades, currently at Sentinel High School. Nielson works primarily with acrylic on a variety of surfaces, producing large-scale paintings that often illuminate public figures.



**32.**

**Kelly Packer**

*ARRIVED AT*

oil-bar on paper, 18 x 14"

Value: \$600

---

Packer grew up in Missoula and now resides in Butte. She earned a BFA from the University of Montana. Her paintings and drawings have been shown internationally and published in various books and literary journals. While living in Boise, Idaho, she co-founded Enso Artspace, an artist collective and gallery space. Her work was selected for the 2010 Boise Art Museum Triennial.



**33.**

**Clay Pape**

*Undertow*

Acrylic, wood stain, wood glue, joint compound, graphite, 8 x 16"

Value \$400

100% Donation

---

Pape was born and raised in the Bitterroot Valley and received his BFA from the University of Montana. After graduating, Pape worked with the Dana Gallery before moving to Portland, Ore., where he works as a gallery assistant for the Clackamas County Arts Alliance. His abstract landscapes have been exhibited widely. Pape is represented by the Dana Gallery.



**34.**

**Alexis Pike**

*Grand Finale Stunt by Bryan "Spanky Jr." Spangler, Evel Knievel Days, Butte, Montana*  
Pigment print on Epson Exhibition Fiber Paper, 18 x 22"  
Value: \$1,200

Pike is a sixth-generation Idahoan who currently lives in Bozeman, where she teaches photography as an associate professor at Montana State University. Pike received a BFA from Boise State University and an MFA from the University of Iowa. She has exhibited work at the Blue Sky Gallery in Portland, Ore., which published a monograph of her work. She has been published in *Harper's* magazine, *WIRED*, and *Surface* magazine.



**35.**

**Marvie Redmond**

*Small Sky*  
Oil on canvas, 12 x 12"  
Value: \$620  
100% Donation

Born in Orange, New Jersey, and raised in Dayton, Ohio, Redmond has been a longtime Missoula resident. She received her BA at Pitzer College in Claremont, California, and has shown her work, including watercolors, oils, and ceramics, in Missoula since 1976. Her solo exhibition, *Skyscapes*, was featured at MAM in 2011.



**36.**

**Seth Roby**

*Little Blackfoot*  
Linoleum cut,  
17 x 22"  
Value: \$350  
100% Donation

Roby was raised in Colorado and received his BFA and BA in art education from Western State College and MFA in printmaking from New Mexico State University. He spent two years in the Peace Corps in Ghana. His work has been exhibited internationally and is included in collections at the Penang State Art Museum in Malaysia and the Kyoto City Museum of Art in Japan.



**37.**

**Elizabeth Rose**

*Boulders*

Intaglio, monotype,  
relief, and ink on  
birch, 12x9"

Value: \$650

---

Rose studied printmaking, photography, and wilderness studies at the University of Montana. She was named among the 25 Up and Coming American Photographers by the Center for Documentary Studies at Duke University in North Carolina. Rose has been a resident artist at Sedona Arts Colony, Penland School of Crafts, Alberta Printmakers Society, and the Absaroka-Beartooth Wilderness Foundation. She lives in Pittsburgh.



**38.**

**Richard Smith**

*Chaotic Order (Order Rises from the  
Ashes of Chaos)*

Wood-fired stoneware, 23 x 17 x 5"

Value: \$600

100% Donation

---

Smith was born in Athens, Ohio, and moved to Missoula in 1983. He holds degrees in physical therapy and anatomy from University of Colorado and Colorado State University. He is a board-certified clinical specialist in orthopedic physical therapy and owner of Missoula Physical Therapy. As a ceramic artist, he has exhibited at the Brink, Radius Gallery, and Clay Studio of Missoula, where he currently serves on the board of directors.



**39.**

**Olivia Stark**

*Fiber*

Graphite and latex on  
paper, 40 x 26"

Value: \$1,300

---

Stark was born in the Flathead Valley and began painting at age 30. Though mostly self-taught, she studied with John Rawlings and Marvin Messing at Flathead Valley Community College. Stark has exhibited at Walking Man Gallery and Still Water Gallery in Whitefish, where she runs her studio/gallery. In 2015, she received a Strategic Investment Grant from the Montana Arts Council and traveled to Maine to study with Steven Aimone of Aimone Art Services.



**40.**

**Lido Vizzutti**

*Before The Storm*

Archival photographic print, 16 x 24"

Value: \$600

100% Donation

---

Vizzutti lives in Missoula and has worked as a professional documentary, commercial, and editorial photographer for more than 15 years. He earned a degree in photojournalism from the University of Montana. Vizzutti helped found the *Flathead Beacon*, a daily online and weekly print newspaper in Kalispell. Some of his regular clients include the *New York Times*, *Associated Press*, *Montana Quarterly*, *Flathead Living*, *Time*, *Newsweek*, *USA Today*, and *Der Spiegel*.



**41.**

**Teresa Garland**

**Warner**

*Daily Grind*

Oil on board, 12 x 12"

Value: \$800

---

After balancing a medical practice and painting for 30 years, Warner turned to art full time in 2009. Based in Missoula, she has shown in Dana Gallery, Radius Gallery, 4Ravens, Gallery 709, and Paws Up. Statewide, she has exhibited at the Yellowstone Art Museum, Paris Gibson Square Museum of Art, Hockaday Art Museum, and the Emerson Center for the Arts and Culture, where she was invited to participate in the exhibition *Montana Women in the Visual Arts, 1860-2011*.



**42.**

**Cathy Weber**

*Six Red Wings on a Branch*

Glazed porcelain, found wood, 24 x 14 x 25"

Value: \$500

---

Weber studied art at the Herron School of Art and Indiana University, followed by a formal painting apprenticeship in Mexico City. She moved to Montana in 1981 and maintains a studio in historic downtown Dillon. She has exhibited widely, including at MAM and the Holter Museum of Art. Her works are included in numerous private and public collections. She approaches her artistic practice with gratitude and her work is motivated by the desire to make things of beauty in response to war, injustice, greed, and violence.



# Timothy Gordon

---

## APPRAISALS

**APPRAISER & BROKER OF RARE THINGS**

Helping collectors discover the value of their art and treasures since 1990. Marketing valuables through the world's best auction houses.

**FEATURED APPRAISER ON "ANTIQUES ROADSHOW"**

Noted appraisals conducted for Princess Diana Kensington Collection • The Jim Morrison Estate • The Ronald Reagan Ranch Collection • The Foonsaner Art Museum

**(406) 728-1812 | [www.gappraisals.com](http://www.gappraisals.com)**

**Salon**

*Artistry in*  
 HAIR  
 SKIN  
 HANDS  
 FEET

**DAY SPA**

**MATRIX** **REDKEN**  **AVEDA** 

**f** 317 S.W. HIGGINS | 406-728-7820



**Culture lives.**

**stephanie boone**  
 personal training studio  
[stephanieboone.com](http://stephanieboone.com)

[missoulian.com](http://missoulian.com)

# Missoulian

Proudly **supporting** the **arts**.

Every **minute**. Every **day**.





335 North Pattee Street  
Missoula, MT 59802  
406.728.0447  
[www.missoulaartmuseum.org](http://www.missoulaartmuseum.org)

---

## Continuing Exhibitions

STEPHEN GLUECKERT: ALL MIXED UP

**Through February 18**

RYAN! FEDDERSEN: RESISTANCE

**Through April 22**

BINARY FORM: CERAMIC ABSTRACTION BY TREY HILL AND ANDREA MOON

**Through May 13**

A DEMOCRATIC SPIRIT: PETER NORTON FAMILY GIFTS

**Through May 27**

## Upcoming Exhibitions

NEXUS: THE LELA AND RUDY AUTIO FAMILY COLLECTION

**February 19–May 21**

SHEILA MILES: LIGHT AND SHADOW

**February 15–June 10**

JERRY RANKIN: FROM THE INSIDE OUT

**February 18–May 27**

BY THE BIKE: APPLEBY/REINEKING, FORD-TERRY, GOODHART, HATCH, AND ZENTZ

**April 21–November 4**

ART EXPRESSIONS: WILLARD ALTERNATIVE HIGH SCHOOL

**April 4–May 27**

CHRIS PAPPAN: GHOST IMAGES

**April 28–August 26**

## Traveling Exhibitions

NEIL CHAPUT DE SAINTONGE AND KEITH GRAHAM, CHASING TIME: MONTANA'S ONE-ROOM SCHOOLS

**February 15, 2017–March 15, 2017: Northcutt Steele Gallery at MSU-Billings**

**April 1, 2017–June 1, 2017: Paris Gibson Square Museum of Art, Great Falls**

Art in Public Spaces

Two of Missoula Art Museum's important supporters are Missoula County and the City of Missoula. The County provides MAM with invaluable operational funding and fine arts insurance, while the City, as official owners of the building, provides rent-free occupancy and key maintenance and building care. In the spirit of this partnership, MAM has installed a variety of works from our permanent collection in art-friendly, publicly used spaces in County and City buildings downtown.

---

**Museum Hours: Tuesday to Saturday 10 AM–5 PM**  
**Free Expression. Free Admission.**

# Proudly supporting art that inspires.



At U.S. Bank, we know the value of the arts. That's why we are proud to support the craftsmanship and dedication of artists and local arts organizations that bring us together and keep inspiring our community. [usbank.com/community](https://usbank.com/community)

U.S. Bank is proud to support the Missoula Art Museum.

Missoula Southside - 2801 Brooks St.

Missoula Downtown - 209 East Spruce

Missoula Russell - 1635 S. Russell

406.523.2309



*the POWER of POSSIBLE.*



EQUAL HOUSING LENDER Member FDIC. ©2016 U.S. Bank 160203C 12/16